

Phenolic Foam Core Panel



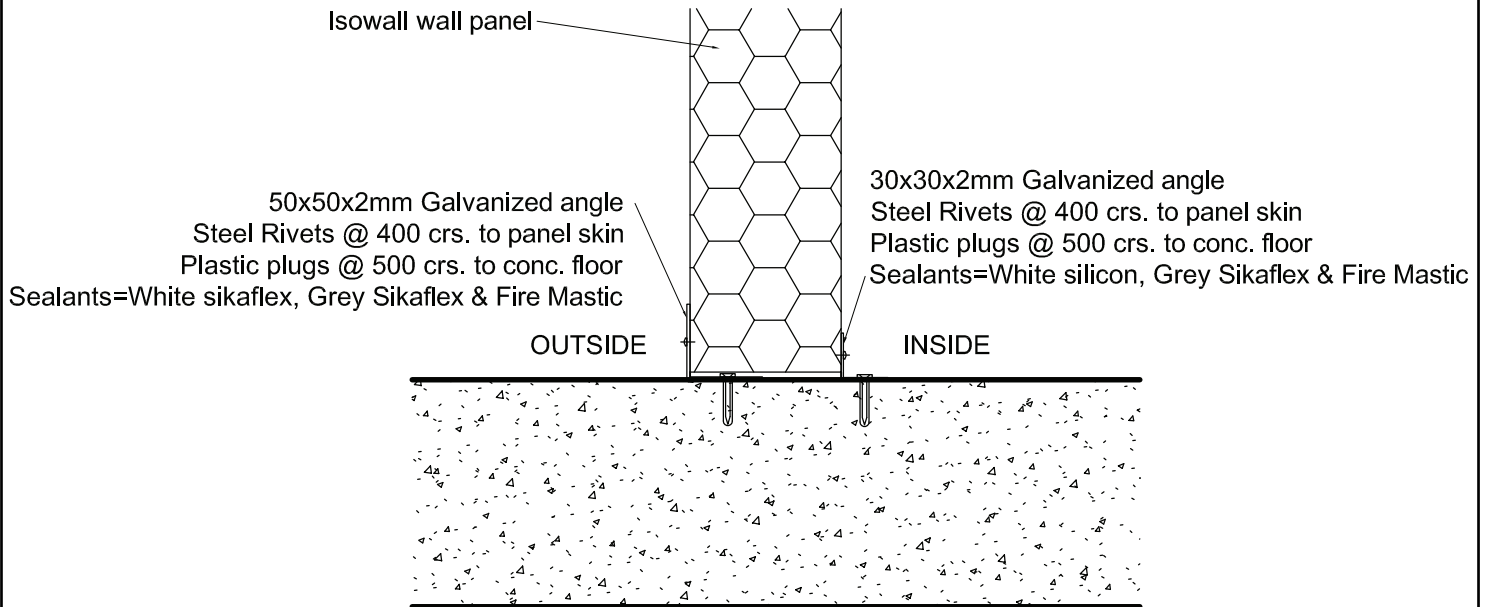
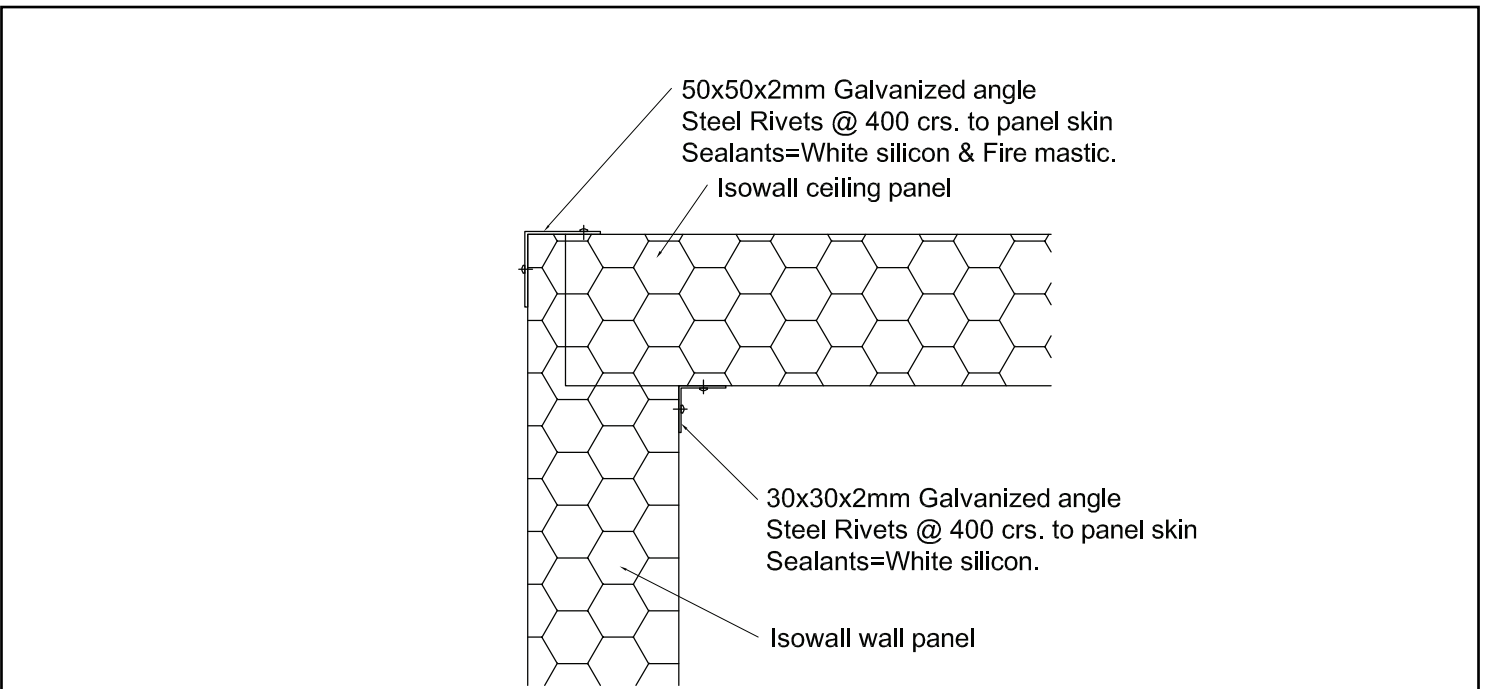
Phenolic foam is a rigid thermal insulation foam, which combines the best properties of EPS and phenolic foam to produce a fire resistant form of insulation. Phenolic foam provides outstanding thermal performance with its high R-value insulation. Specifiers can rest assured that Phenolic foam is a great fire resistant form of insulation that Isowall is proud to use in its Sandwich Panel. The matrix of EPS and phenolic foam provides strength and excellent insulation properties making it ideal for cold storage insulation. Phenolic foam does not promote mould growth and it is not a source of food for insects or vermin. Phenolic foam boasts a light environmental footprint and its combination of strength, weight and ease of application make it an ideal choice as an insulation material.


Technical data

Performance of the panel varies with thickness and the following table gives recommended usage limits.

Span data for Phenolic foam panels:					
Core Thickness (mm)	Max. Unsupported Wall Height (mm)	Max Unsupported Ceiling Length (mm)	'U' Value (W/m ² .K)	'R' Value (m ² .K/W)	Panel Weight (0.5mm coil) (kg/m ²)
50	3000	2500	0.736	1.359	7.69
75	5000	5500	0.491	2.038	11.53
100	6000	6000	0.368	2.717	15.37
125	7500	7000	0.294	3.397	19.22
150	8500	7600	0.245	4.076	23.06
200	11000	8500	0.184	5.435	30.74

All maximum ceiling spans must be reduced by 25% if exposed to direct sunlight.



 <p>Isowall Southern Africa (Pty) Ltd Reg. No. 1982/010393/07</p>	<p>TITLE:</p> <p>FIXING MAT'L USED FOR PHENOLIC FOAM PANELS</p>	<p>DRAWING NO:</p> <p>ISO DWG DET 026</p>	<p>THIS DRAWING IS THE PROPERTY OF ISOWALL S.A. (PTY)LTD</p> <p>COPYRIGHT : THIS DRAWING SHOULD NOT BE COPIED OR DISCLOSED TO ANY THIRD PARTY WITHOUT THE EXPRESS PERMISSION OF ISOWALL S.A. (PTY) LTD</p> <p>DESIGN RIGHT : ALL DESIGN RIGHTS IN THE DESIGN RECORDED ON THIS DRAWING ARE THE PROPERTY OF ISOWALL S.A. (PTY) LTD AND SHOULD NOT BE REPRODUCED OR DISCLOSED TO ANY THIRD PARTY WITHOUT THE EXPRESS PERMISSION OF ISOWALL</p>
---	--	--	---

All data conforms to current best practice and is for guidance only. For specific conditions of use please refer to our Technical Department. Isowall Southern Africa reserves the right to alter specifications without prior notice.

CONTACT DETAILS:
 326 Derdepoort Road, Silverton | (012) 804 3564 | info@isowall.co.za | www.isowall.co.za