

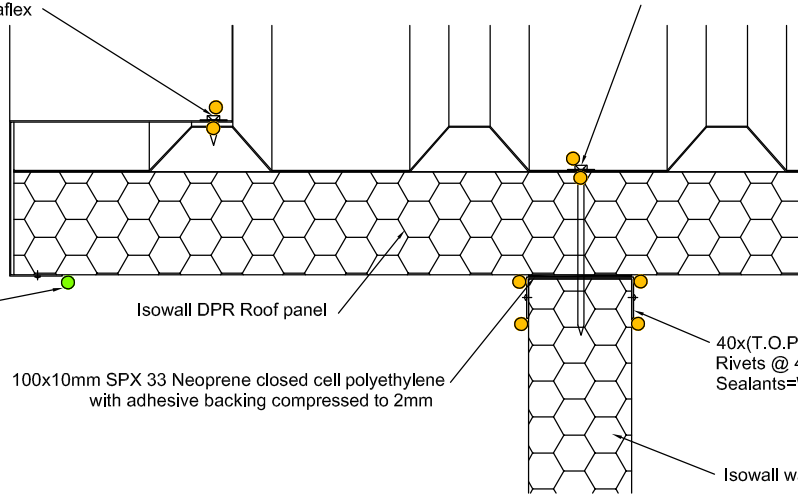
200x(T.O.P.)x50 0.5mm AZ150 barge flashing (male side)
 15mm Tek screw & Bonded washer Tek screw cap @
 500mm crs. to panel skin
 Screws must be inserted perpendicular to the panel skin
 Screw cap secured to screw head with white sikaflex

Tek screw & Bonded washer with
 Tek screw cap @ 500mm crs. through panel
 skin into wall
 Screws must be inserted perpendicular to
 the panel skin and in the center of the valley
 Screw cap secured to screw head with white Sikaflex

Rivets @ 400mm crs. to panel skin
 (underside only)
 Sealants=White silicon

100x10mm SPX 33 Neoprene closed cell polyethylene
 with adhesive backing compressed to 2mm

40x(T.O.P.)x40x2mm Galv. channel
 Rivets @ 400mm crs. to panel skin
 Sealants=White sikaflex



T.O.P.=THICKNESS OF PANEL

Sealants Colour Legend

- White silicon
- White sikaflex
- Grey Sikaflex
- Mastic
- Polar Roof